

RIVERSIDE HOLIDAYS

NORFOLK BROADS

A scenic view of a Norfolk Broad. In the foreground, a person is sitting on a launch (a small boat) under a green umbrella, looking out over the water. The water is blue and has two white swans swimming. In the background, there are several houses and trees along the bank under a clear blue sky.

BUNGALOWS & LAUNCHES FOR HIRE

RIVERSIDE HOLIDAYS LTD.

WOODCROFT, WOOD STREET, CATFIELD GT. YARMOUTH, NORFOLK NR29 5DF

TELEPHONE: 01692 580496

e.mail: riversideholidays@keme.co.uk enquiries@riverside-holidays.co.uk

web: www.riverside-holidays.co.uk

**IMPORTANT: WHEN YOU BOOK BY TELEPHONE, HAVE YOUR RIVERSIDE
HOLIDAYS BROCHURE WITH YOU.
01692 580496**

FISHING - CLOSED SEASON
A closed season for fishing operates
throughout the Broads from 15th March to 15th June



Last Minute Bookings

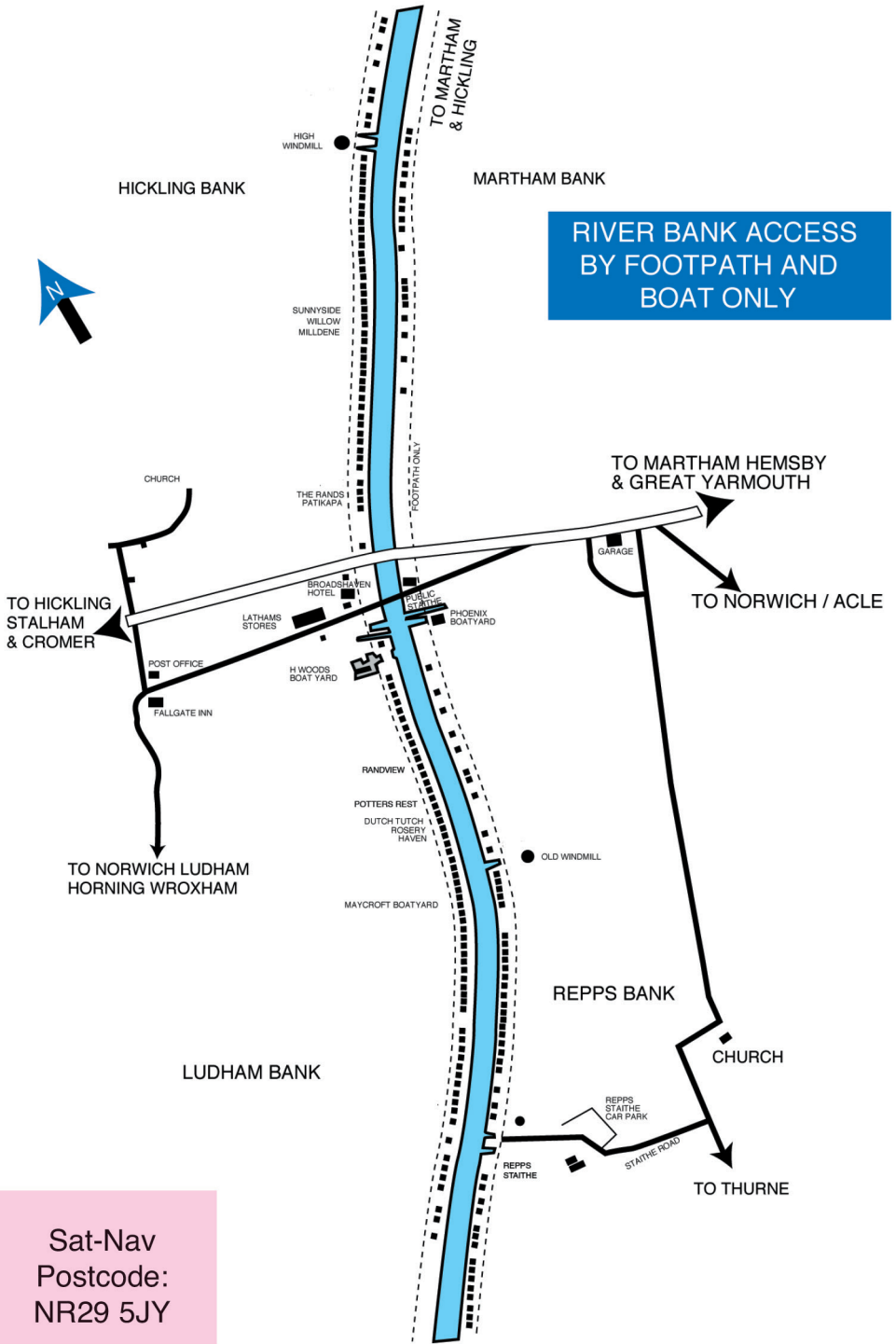
Vacancies do occur from time to time through cancellations.
If you want to book a holiday relatively at a short notice - even as little as 24 hours -
please do phone us. We will always do our best for you.

ARRIVALS - All visitors should report to the Site Office at Potter Heigham Bridge (For sat-nav - NR29 5JY). Visitors should inform the Booking Office of their expected time of arrival by sending back the pink arrival slip, duly completed, **28 days** before their holiday is due to start. For those arriving early we will try to arrange for their accommodation to be ready as soon after **12 noon** as possible. For visitors arriving after **5p.m.** arrangements will be made for them to be met at the Site Office.

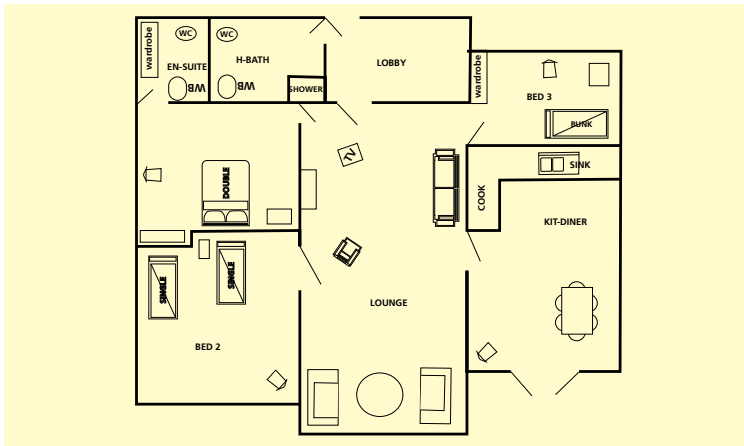
The Site Office at POTTER HEIGHAM is open during the main season on
SATURDAYS between 9a.m. and 5p.m. June to October.

PLAN OF RIVERSIDE BUNGALOWS POTTER HEIGHAM

RIVER BANK ACCESS
BY FOOTPATH AND
BOAT ONLY



Sat-Nav
Postcode:
NR29 5JY



Bungalow on the Ludham bank with a 40ft river frontage. Three bedrooms one with double bed and ensuite bathroom. One with two single beds and one with two bunk beds. Linen provided. Lounge with colour TV and electric fire. There are also numerous electric heaters. Kitchen/diner with electric cooker, fridge, small freezer, microwave, dishwasher and electric water heater over sink. Shower room with shower wash basin and WC. **FREE ELCTRICITY**

PETS
 Where pets are allowed there is a charge of £20.00 per pet per week.



Bungalow on the Ludham bank, with 30 ft. river frontage.

Two bedrooms, one with double bed and one with two single beds. Also bed-settee in lounge. Linen provided.

Lounge/diner with colour TV and electric fire.

All rooms have heaters.

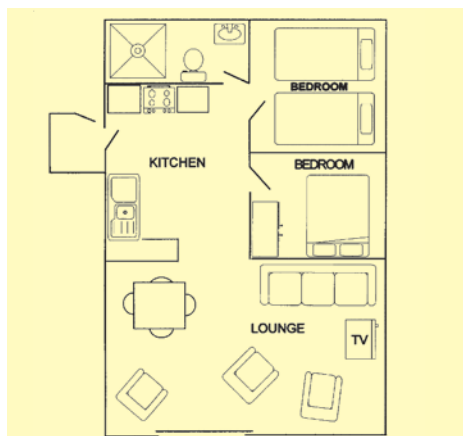
Kitchen area with electric cooker, fridge and microwave.

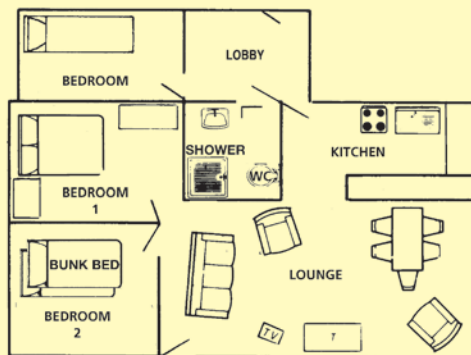
Peninsula unit divides kitchen from lounge.

Shower room with shower, WB and WC.

Electricity by £1 meter.

Part of lawn fenced for children. Garden furniture provided. Sorry no pets.





Riverside bungalow at Martham. Private plot with 70ft river frontage & boat dyke. Quiet location at upper reaches of the River Thurne with open views
 Three bedrooms - one with double bed, one with bunkbeds, & one with single bed.
 Linen provided.

Lounge with colour television and digi-box.

Electricity charged by units used.

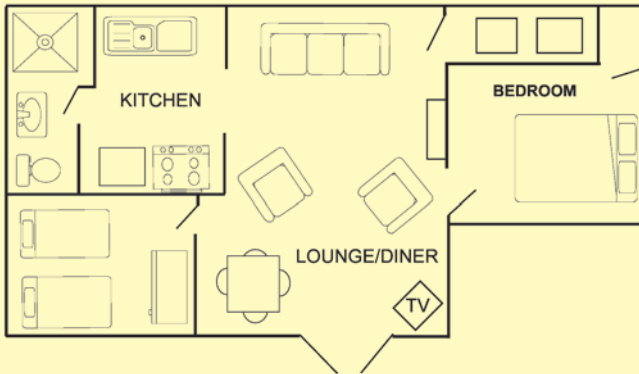
Kitchen: Open plan with electric cooker, fridge, microwave and water heater.

Shower room with shower, wash basin and WC. Garden furniture provided.

Free reserved parking space at Martham Ferry.

WHEELCHAIRS

In the managements opinion our holidays are
NOT suitable for wheelchairs.



Bungalow on the Hickling bank with approx. 90ft riverfront including boat dyke. Two bedrooms, one with full size double bed and TV, the other with two full size single beds. There is also a convertible bed settee in the lounge. Open plan lounge diner with wide screen TV and DVD player. Kitchen with electric cooker, microwave, fridge, freezer and dishwasher. A washing machine and tumble dryer are also provided. Shower room with double size shower cubicle, WB and WC. Electric heating, linen provided and FREE ELECTRICITY. Outside lawn area with garden furniture. Tackle shed. Located next to Willow PH76b. Free parking for one car near the bridge. No smoking inside the bungalow. Sorry no pets.

RIVER BANK ACCESS BY FOOTPATH AND BOAT ONLY

CAR PARKING

There are car parks at Martham, Repps Staithe and near Potter Heigham Bridge.

Some bungalows have a free reserved parking space for one car.

At The Old Bridge Inn site next to the Bridge, parking charges are:

15 June to 14 Sept - £35.00

18 May to 15 June - £25.00

14 Sept to 1 Nov - £25.00

Before 18 May - £10.00

After 1 Nov - £10.00

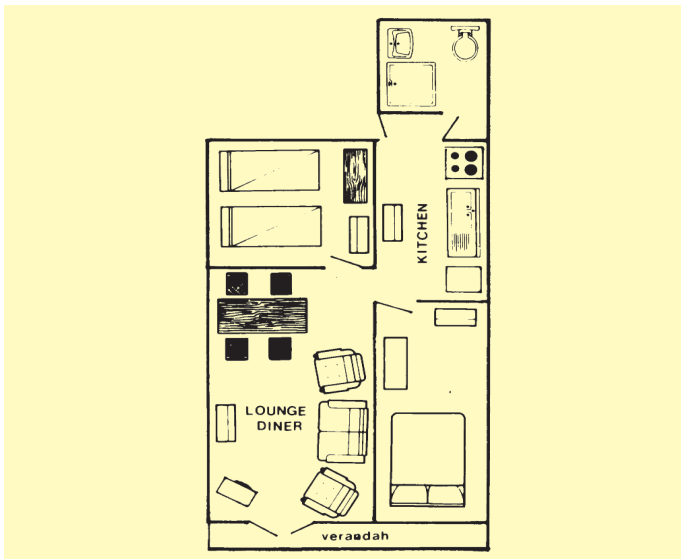
No need to book in advance.

Payment on arrival by cash only please.

Daily parking also available.

For a small charge there is a river taxi service which can take you and your luggage between the carpark and your bungalow.

If you experience any problems during your stay please let the owner of Riverside Holidays know as soon as possible so that we can do our best to rectify the problem



Bungalow on the Ludham Bank. Private plot with approx. 30ft river frontage. Two bedrooms, one with double bed and one with two single beds. Lounge/Diner with electric fire, freeview TV and DVD player. Electric heaters in all rooms. PVCu double glazing. Kitchen with cooker, fridge, sink, water heater and microwave. Linen provided. Electricity by £1 slot meter. Bathroom with bath/shower, WB and WC. Garden furniture provided.



Bungalow on Hickling bank near the bridge and shops with river frontage for mooring and fishing. Rands is close to the bridge and shops with open riverside opposite. Lawn beside the bungalow with patio furniture and tackle shed. Double bedroom with digital DVD, TV and electric heater. Bedroom with twin beds and electric heater. Beds pre-made up. Shared en-suite to bedrooms with large walk in shower WB, WC and heated towel rail. Lounge/Diner with 4 recliners, digital DVD TV and electric heater. Kitchen with fridge, electric heaters, cooker, extractor hood and microwave. UPVC windows and door. Available all year round. **FREE ELECTRICITY**

**IMPORTANT: WHEN YOU BOOK BY TELEPHONE, HAVE YOUR RIVERSIDE
HOLIDAYS BROCHURE WITH YOU.
01692 580496**

RIVERSIDE HOLIDAYS LTD

**Woodcroft, Wood Street,
Catfield, Gt Yarmouth
NR29 5DF**

**Web: www.riverside-holidays.co.uk
E.mail: enquiries@riverside-holidays.co.uk
riversideholidays@keme.co.uk
Site office near Potter Heigham Bridge Sat
Nav - NR29 5JY**

**For a small charge there is a river taxi service which can take you
and your luggage between the carpark and your bungalow.**

FISHING - CLOSED SEASON
**A closed season for fishing operates
throughout the Broads from 15th March to 15th June**

RIVERSIDE HOLIDAYS LTD 2025 PRICES

BUNGALOW	Page	Sleeps	A	B	C	D	E	F	G
			£	£	£	£	£	£	£
HAVEN	5	4/6	462	547	610	696	720	786	875
PATIKIPA	14	2	484	550	621	670	704	735	790
POTTERS REST	9	4	394	469	523	599	629	673	726
RANDS *	10	4	484	598	684	760	821	882	984
ROSEY *	4	6	468	557	644	720	767	833	929
SUNNYSIDE *	7	4/6	563	616	705	777	825	890	975
WILLOW *	15	2	484	484	484	530	551	599	668

*FREE ELECTRICITY Page Sleeps A B C D E F G

Date Hire Charge Periods

Jan 4	-	May 17	A
May 17	-	May 26	B
May 26	-	June 31	C
May 31	-	June 7	C
June 7	-	June 14	D
June 14	-	June 21	E
June 21	-	June 28	F
June 28	-	July 5	F
July 5	-	July 12	F
July 12	-	July 19	F
July 19	-	July 26	G
July 26	-	Aug 2	G
Aug 2	-	Aug 9	G
Aug 9	-	Aug 16	G
Aug 16	-	Aug 23	G
Aug 23	-	Aug 30	G
Aug 30	-	Sept 6	E
Sept 6	-	Sept 13	D
Sept 13	-	Sept 20	C
Sept 20	-	Sept 27	B
Sept 27	-	Oct 4	A
Oct 4	-	Oct 11	A
Oct 11	-	Oct 18	A
Oct 18	-	Oct 25	B
Oct 25	-	Dec 20	A

ALL BOOKINGS ARE FROM 4pm SATURDAY TO 10am SATURDAY
V.A.T. IS INCLUDED IN THE PRICES OF BUNGALOWS WHERE APPLICABLE

DO NOT DELAY IF YOU WISH TO SECURE THE BUNGALOW AND LAUNCH OF YOUR CHOICE
JUST CALL - 01692 580496

Launch Prices

	High	Mid	Low	
Phoenix	390	385	355	
Elizabeth	350	335	305	
Dolly	340	325	295	HIGH SEASON
Poppy	340	325	295	
Sue	345	330	300	MID SEASON
Betty	290	285	260	
Kathleen	285	280	255	
Dinghy	230	230	215	LOW SEASON
				Before May 10
				After Oct 25

DEPOSITS (Initial payments)

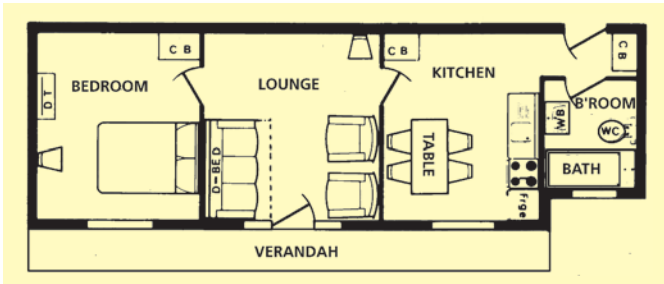
BUNGALOWS: Prices A B - £90 per week (includes £14 payment to Hirers Cancellation Plan and £76 towards the cost of your holiday)

Prices C D E F G - £150 per week (includes £14 payment to Hirers Cancellation Plan and £136 towards the cost of your holiday)

LAUNCHES £60 per week (includes £4 payment to Hirers Cancellation Plan and £56 towards the cost of launch hire)

YOU ARE ADVISED TO BOOK EARLY TO AVOID DISAPPOINTMENT, PROVISIONAL BOOKINGS FOR 2026 CAN NOW ALSO BE ACCEPTED THESE WILL BE SUBJECT TO THE BUNGALOW OR LAUNCH SELECTED BEING AVAILABLE FOR 2026 AND THE FULL DEPOSIT WILL BE RETURNABLE IF YOU SHOULD DECIDE TO CANCEL FOR ANY REASON UP TO JANUARY 15th 2026

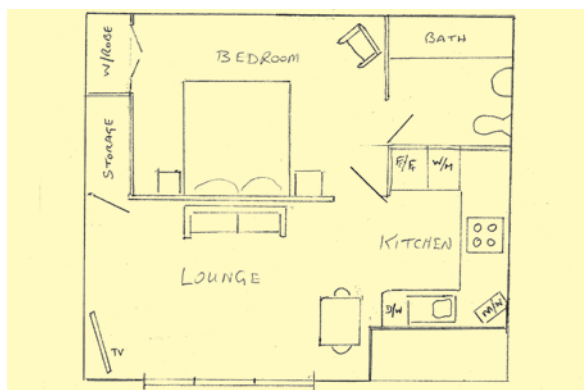
DO NOT DELAY IF YOU WISH TO SECURE THE BUNGALOW AND LAUNCH OF YOUR CHOICE
JUST RING 01692 - 580496



Bungalow with 42ft river frontage on the Hickling Bank. Near to the bridge and shops but still far enough away to offer a peaceful location with open views. One double bedroom with bed made for your arrival. Lounge with colour TV and video recorder. Separate kitchen with electric cooker, fridge freezer, dishwasher and microwave. Bathroom with shower, WB and WC. Electricity by £1 slot meter. Rooms have sufficient electric heaters for all year round occupation. Garden furniture provided. Tackle shed.

Patikipa and Rands
on
Hickling Bank





Bungalow on the Hickling bank with approx. 30ft river front. Rebuilt in 2009 and extended in 2016. Open plan living area, wide screen TV and DVD.

Large bedroom with full size double bed and en suite bathroom with full size bath, shower, wc and wb. Modern kitchen with electric cooker, microwave, fridge freezer, washer/dryer and dishwasher. Electric heating, linen provided and FREE ELECTRICITY. Outside lawn area with garden furniture and storage. Located next to Sunnyside PH76. No smoking inside the bungalow. Sorry no pets.

RIVER BANK ACCESS BY FOOTPATH AND BOAT ONLY

CAR PARKING

There are car parks at Martham, Repps Staithe and near Potter Heigham Bridge.

Some bungalows have a free reserved parking space for one car.

At The Old Bridge Inn site next to the Bridge parking charges range from £10 to £35 per car per week

No need to book in advance

Payment on arrival, by cash only

Daily parking also available

For a small charge there is a river taxi service which can take you and your luggage between the carpark and your bungalow.

IMPORTANT: WHEN YOU BOOK BY TELEPHONE, HAVE YOUR RIVERSIDE HOLIDAYS BROCHURE WITH YOU.

01692 580496

PETS

Where pets are allowed there is a charge of £20.00 per pet per week.

PHOENIX MOTOR LAUNCHES



Six seater GRP launches with diesel engines.
£50 security deposit required.
V.A.T. included in price.
Free fuel.

2025 SEASON

HIGH SEASON: June 28 - Aug 30
MID SEASON: May 10 - June 28
Aug 30 - Oct 25
LOW SEASON: Before May 10
After Oct 25

WHY NOT HIRE A BOAT OF YOUR OWN FOR YOUR HOLIDAY

You can increase your fun so much by hiring a Motor Launch with your holiday accommodation to make daily tours of the local waters or broads, or for fishing expeditions. Hire terms of these craft, of course, include full insurance cover.

MOORING FOR YOUR BOAT DURING THE WEEK

Your boat can be taken away and kept at your holiday home, nearby staithe, or can be moored at the owners' boatyard. Please do not take bungalow cushions, crockery or cutlery on to the boats. When not booked by our bungalow clients, these boats may be hired by other Broadland visitors.

MAYCRAFT MOTOR LAUNCHES



Dolly

Seats 6



Kathleen

Seats 5



Sue

Seats 7



Poppy

Seats 6



Fishing dinghy

Seats 3

Fishing dinghy with new 4hp outboard engine - ideal for fishing in Hickling Broad area.



Elizabeth

Seats 8



Betty

Seats 8

2025 SEASON

	HIGH	MID	LOW		SEASON
Phoenix	390	385	355	HIGH:	June 28 - Aug 30
Elizabeth	350	335	305	MID:	May 10 - June 28
Dolly	340	325	295		Aug 30 - Oct 25
Poppy	340	325	295	LOW:	Before May 10
Sue	345	330	300		After Oct 25
Betty	290	285	260		
Kathleen	285	280	255		
Dinghy	230	230	215		

CONDITIONS OF HIRE BUNGALOWS AND BOATS

- 1. TERMS.** All terms are per week, and for the property as equipped and described. The usual time of take-over is 4pm. subject to unavoidable delays). You must leave the property by 10am. You are expected to leave everything in a clean and tidy condition.
- 2. BOOKING REMITTANCE.** When bookings are made the initial payment stated must be sent. The initial payment consists of a Booking deposit and a Cancellation plan subscription. The Booking Deposit forms part payment of the hire charge.
- 3. BALANCE OF HIRE.** The balance of Hire Charge is due and payable at least 42 days before your holiday begins.
- 4. BOOKING CANCELLATION. If you are compelled to cancel, notify us immediately in writing — AND RETURN YOUR HIRE INVOICE.** You will receive a written acknowledgement of your cancellation by return . We will then endeavour to re-let for you. If we are successful in reletting you only forfeit your deposit monies. If we don't re-let you are responsible for the whole of the balance due. Your subscription to the Cancellation Plan covers you for part or all of this liability.
- 5. NON-ARRIVAL.** If you do not take possession of the bungalow and/or boat on the appointed day and fail to notify Riverside Holidays of your late arrival, we reserve the right to re-let the bungalow and/or boat from 10am. of the following day. In all cases of non-arrival the hirer will be responsible for the balance due.
- 6. MINORS.** Bookings from those who are under 18 cannot normally be accepted.
- 7. TOWELS.** These are not supplied with your linen.
- 8. ACCOMMODATION.** No property may normally be occupied by more persons than stated. An additional person can be accommodated on certain properties at an extra charge of £30 per week. By prior arrangement).
- 9. AVAILABILITY.** The booking is made on the understanding that the property will be placed at your disposal on the date stated. Should this not be possible through circumstances not under the control of the owner e.g. fire, theft, damage) we cannot guarantee to provide an alternative property in which case the booking deposit will be returned to you in full, but you will have no claim against the owner or agent. In the interests of continued improvement, the owner reserves the right to alter or delete facilities previously available without prior notice.
- 10. PETS.** Some bungalows clearly and strictly state NO PETS others allow one pet per bungalow. Sometimes additional pets are allowed by prior arrangement. £20 per pet per week is charged. You are allowed to bring your pet on the clear understanding that in NO circumstances may you pet lay on the bedding or chairs.
- 11. LAYOUT PLANS** of Holiday Homes in this Brochure are for general guidance only. They are not drawn to scale.
- 12.** Whilst every care is taken to ensure that the details shown in this Brochure are correct, Riverside Holidays Ltd cannot accept responsibility for errors contained therein or the results thereof.
- 13. CONTRACT.** A booking forms a contract between the hirer and the bungalow owner, Riverside Holidays Ltd. acts as an agent for the owner.
- 14. Note:** Where bungalow description states, double bed, this may only be 4ft.
- 15. WHEELCHAIRS** In the managements opinion our holidays are NOT suitable for wheelchairs.

CANCELLATION PLAN

By the Conditions of Hire, you as the hirer are responsible for the full hire cost of your holiday, even if you are not able to take possession. To help you meet this condition you are covered by Riverside Holidays Ltd under their Cancellation Plan unless you opt out of it.

If you choose not to be covered by the Cancellation Plan you must pay the whole cost of the holiday when you book. If you then cancel fewer than 70 days (10 weeks) before the holiday start date for any reason you will lose the whole payment. If we manage to re-let the property you will be refunded the amount that we re-let for less the deposit amount.

If you cancel more than 70 days (10 weeks) before your holiday start date you will lose your deposit but be refunded your balance of hire.

The Cancellation Plan terms cover differently Qualifying reasons and Non-Qualifying reasons. Qualifying reasons are if you cancel prior to your holiday because of illness, death, injury, maternity, redundancy (as in the Redundancy Payment Act) or jury service of you or your close relative, where this can be substantiated, and has arisen since you made the booking.

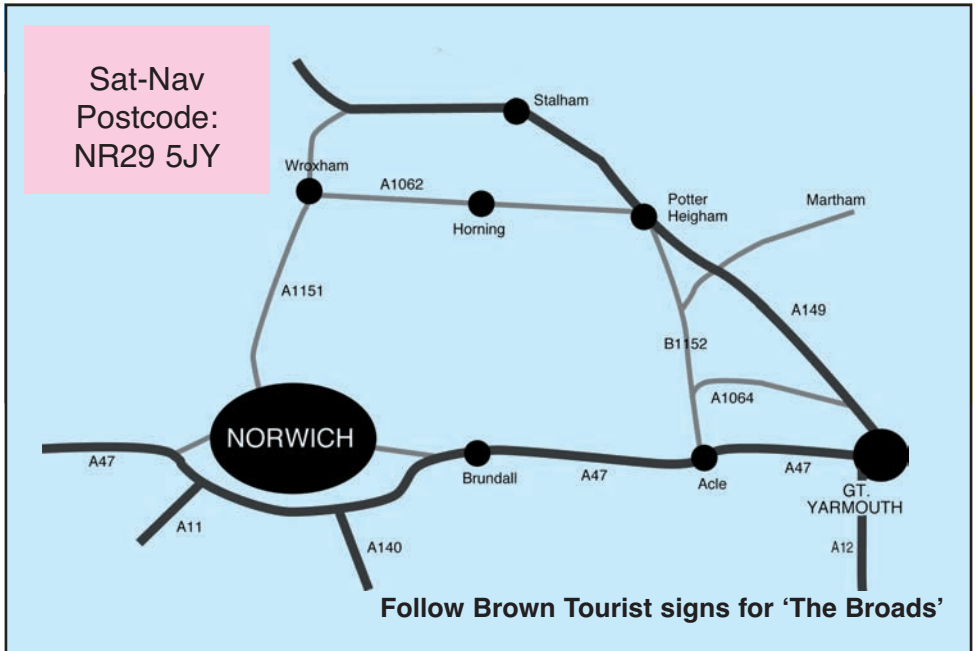
YOU MUST NOTIFY US IMMEDIATELY THE CIRCUMSTANCES ARISE, AND CONFIRM IN WRITING.

Under the Cancellation Plan:

1. if you cancel for any reason more than 70 days (10 weeks) before the start date of your holiday, you will be refunded the deposit and any balance if already paid.
2. if you cancel more than 42 days (6 weeks) before the start date of your holiday, for a Qualifying reason, you will be refunded the deposit and any balance already paid.
3. if you cancel for any reason other than a Qualifying reason, more than 56 days (8 weeks) but fewer than 70 days (10weeks) before the start of your holiday, any balance paid will be refunded but you will lose your deposit.
4. if you cancel for any reason other than a Qualifying reason, fewer than 56 days (8 weeks) before the start date of your holiday, you will lose your deposit and be responsible for the balance of hire. If we manage to re-let the property you will be refunded the amount that we re-let for less the deposit amount.
5. if you cancel for any reason fewer than 42 days (6 weeks) before the start of your holiday, you will lose your deposit and your balance. If we manage to re-let the property you will be refunded the amount that we re-let for less the deposit amount.

'Deposit' means: for a boat £56 per week or for a bungalow £76 or £136 per week depending on the date of the holiday.

You are advised to seek holiday insurance to cover your holiday, especially for circumstances where you would not be refunded by our Cancellation Plan.



Riverside Holidays Ltd

Riverside Holidays Ltd is a small family run business which has been providing self-catering holidays in riverbank bungalows for 50 years.

Most of our bungalows are along the river Thurne in Potter Heigham, Repps and Martham based around the medieval bridge in the Broads National Park.

The River Thurne offers excellent fishing especially for Bream, Roach, Perch and Pike, either from bungalow lawns or by boat further up river at Hickling Broad, Martham Broad and Horsey Mere.

The Broads National Park can be explored by boat but also offers fabulous opportunities for walking and cycling. The Weavers Way trail passes along the riverbank here. There are National Reserves within easy reach by boat, car or cycle. Bird watchers can see Harriers, Crane, Bearded Tits and perhaps Bitterns. Otters and Swallowtail butterflies are sometimes seen on bungalow lawns!

At Potter Heigham there are cafes and restaurants, two pubs, plus Lathams with its large fishing tackle section.

Quiet sandy beaches and dunes are less than five miles away (with seal colonies in autumn and winter). The large seaside resort of Great Yarmouth is only ten minutes away, while the historic city and shopping centre of Norwich is only fifteen miles. We hope you will enjoy your stay in Norfolk.

BOOKING FORM 2025

JUST SEND THIS FORM WITH YOUR MONIES TO:-
 RIVERSIDE HOLIDAYS LTD., WOODCROFT, WOOD STREET, CATFIELD, GT.YARMOUTH, NORFOLK. NR29 5DF
 PLEASE BOOK FOR ME:-

IMPORTANT

IT IS BEST TO FIRST BOOK BY PHONE
 01692 - 580496

BUNGALOW LAUNCH
 DATES FROM TO
 PARTY NAME
 NAME
 NAME
 NAME

ARE YOU BRINGING A DOG? Please state YES OR NO.....

BUNGALOWS PRICE CATAGORIES A B - £90 PER WEEK
 C D E F G - £150 PER WEEK
 (INCLUDING £14 PER WEEK CANCELLATION PLAN SUBSCRIPTION)
 LAUNCHES AT £60 PER WEEK (INCLUDING £4 PER WEEK
 CANCELLATION PLAN SUBSCRIPTION)

INITIAL
 PAYMENT.
 See below

£		P

TOTAL

I declare that I am over 18 years of age and I agree to be held responsible for the balance of Hire
 Terms which become due in accordance with the conditions stated in Riverside Holidays Ltd.

Signature Date
 NAME (IN CAPITALS) MR/MRS/MISS Tel.No.
 ADDRESS mobile

 e.mai

NB
 CANCELLATION PLAN AS SHOWN IN
 BROCHURE ONLY COVERS PERSONS
 NAMED ON BOOKING FORM

INITIAL PAYMENTS ARE FULLY RETURNABLE BEFORE 30th JANUARY

BOOKING FORM 2025

IMPORTANT
IT IS BEST TO FIRST BOOK BY PHONE
01692 - 580496

JUST SEND THIS FORM WITH YOUR MONIES TO:-
RIVERSIDE HOLIDAYS LTD., WOODCROFT, WOOD STREET, CATFIELD, GT.YARMOUTH, NORFOLK. NR29 5DF
PLEASE BOOK FOR ME:-

BUNGALOW **LAUNCH**
DATES **FROM** **TO**
PARTY **NAME** **NAME**
 **NAME** **NAME**
 **NAME** **NAME**

ARE YOU BRINGING A DOG? Please state YES OR NO.....

BUNGALOWS PRICE CATAGORIES A B - £90 PER WEEK
 C D E F G - £150 PER WEEK
 (INCLUDING £14 PER WEEK CANCELLATION PLAN SUBSCRIPTION)
 LAUNCHES AT £60 PER WEEK (INCLUDING £4 PER WEEK
 CANCELLATION PLAN SUBSCRIPTION)

£		p

I declare that I am over 18 years of age and I agree to be held responsible for the balance of Hire
 Terms which become due in accordance with the conditions stated in Riverside Holidays Ltd. **TOTAL**

Signature **Date**
NAME (IN CAPITALS) MR/MRS/MISS **Tel.No.**
ADDRESS **Mobile**

e.mail

INITIAL PAYMENTS ARE FULLY RETURNABLE BEFORE 30th JANUARY

NB
CANCELLATION PLAN AS SHOWN IN
BROCHURE ONLY COVERS PERSONS
NAMED ON **BOOKING FORM**

Riverside Holidays

2025

Email - riversideholidays@keme.co.uk
enquiries@riverside-holidays.co.uk

Satnav - NR29 5JY
Tel - 01692 580496